

THE TABLEY



BROADMEADOW PARK  
SANDBACH • CHESHIRE



French doors leading to the garden from both the dining area and the lounge provide plenty of light to this generously sized 3 bedroom home.



**LATIMER**  
by Clarion Housing Group

# Site plan

- The Tabley
- Show homes and marketing suite



# Specification

## Kitchen

- Choice of stylish kitchen doors and worktops\*
- One & a half bowl sink with mixer tap
- Integrated appliances including; fan assisted electric double oven, 4 ring hob, stainless steel extractor hood, fridge-freezer and washing machine
- Feature under-cupboard lighting

## Bathroom and Ensuite

- Thermostatically controlled shower over bath and to ensuite shower enclosure
- Villeroy & Boch white sanitaryware with chrome fittings
- Trojan white bath
- Shaver point
- Choice of Porcelanosa ceramic wall and floor tiles\*

## External

- Turf to rear garden
- Fencing to rear garden
- Outside tap
- External lights to front and rear

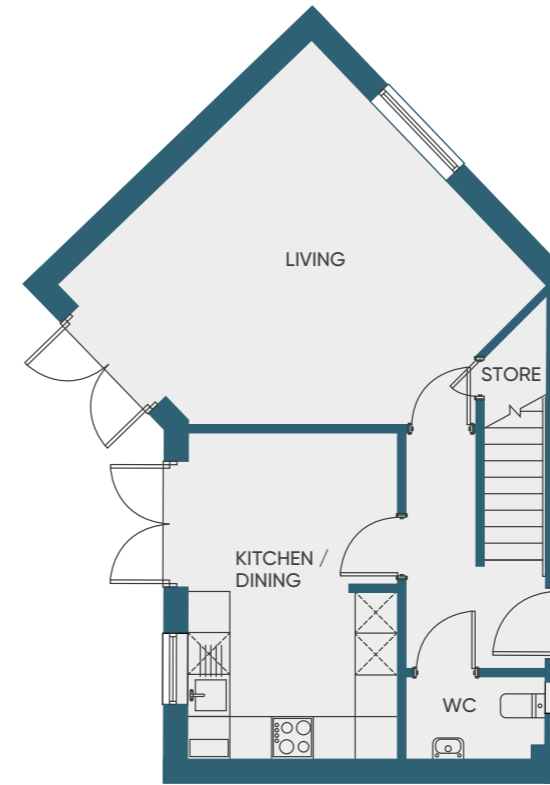
## General

- PVCu double-glazed windows with locking handles
- Oak veneered doors with chrome door furniture
- Gas central heating with thermostatically controlled radiators
- Recessed downlighters to kitchen, bathroom & ensuite
- TV and Telephone point to ground floor and master bedroom
- Hard-wired smoke alarms with battery back-up to all floors
- Additional Heat detector to kitchen

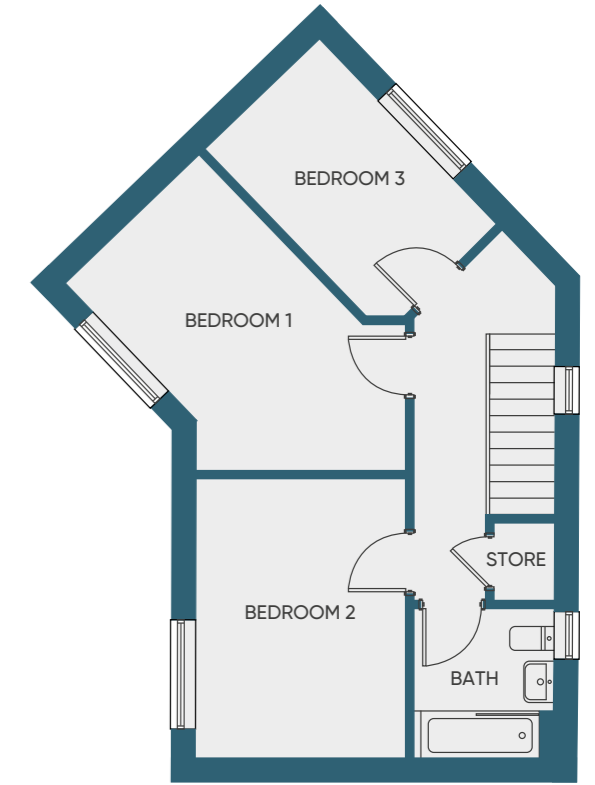
\*Choices are available subject to stage of construction

# The Tabley

3 bedroom house



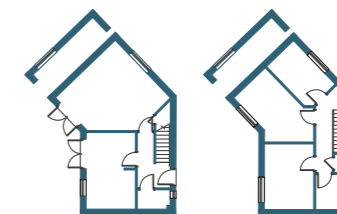
Ground floor



First floor

Living	5.16m x 4.97m	16.9ft x 16.2ft
Kitchen/ Dining	4.75m x 3.08m	15.5ft x 10.1ft
Bedroom 1	3.58m x 2.71m	11.7ft x 8.8ft
Bedroom 2	4.08m x 3.08m	13.3ft x 10ft
Bedroom 3	4.89m x 2.20m	16ft x 7.2ft

Wall variations



Whilst every effort has been made to ensure that this information is correct, it is intended as a guide only. No responsibility or liability will be accepted by Latimer in relation to the information provided and this does not constitute or form any part of a contract of sale. Purchasers should satisfy themselves with regard to the accuracy of the information. All dimensions are approximate and to the widest point. Given that each home has a unique layout, please check the actual plot or ask the sales team for further details. Latimer and associated companies reserve the right to amend the home layouts, specification or materials. All details correct as above at time of going to print. November 2020.



**LATIMER**  
by Clarion Housing Group



#### Marketing Suite

1 Fieldfare Way, Sandbach, CW11 3TR  
(Access off Abbey Road CW11 3HA)

#### Latimer Sales Enquiries

For all sales enquiries get in touch  
with our dedicated sales team

**E:** [sales@broadmeadowpark.co.uk](mailto:sales@broadmeadowpark.co.uk)

**T:** 01270 260 506

**W:** [broadmeadowpark.co.uk](http://broadmeadowpark.co.uk)

Latimer is part of Clarion Housing Group.  
Latimer Developments Limited.

**It all begins here.**