

THE ADLINGTON



BROADMEADOW PARK
SANDBACH • CHESHIRE



The Adlington is exquisitely designed with our premium features, it includes bifold doors to the dual aspect lounge and kitchen areas, 4 spacious bedrooms, 2 ensuites and a detached garage.



LATIMER
by Clarion Housing Group

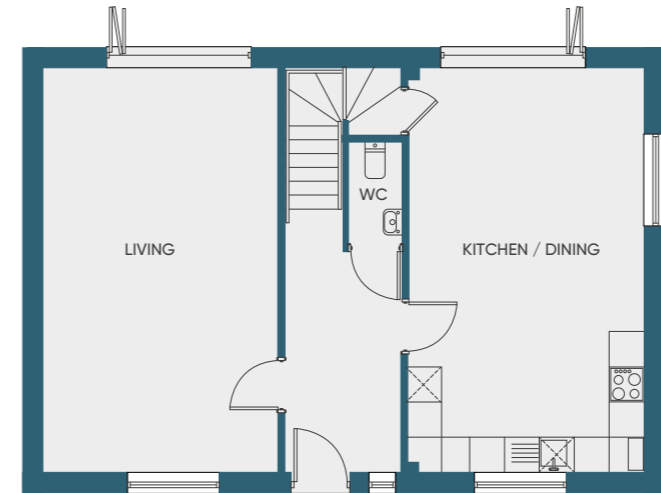
Site Plan

- The Adlington
- Show homes
- Future phase

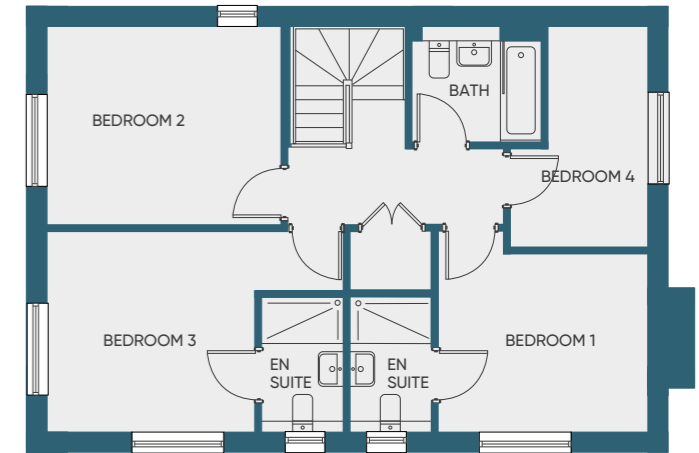


The Adlington

4 bedroom house



Ground floor



First floor

Specification

Kitchen

- Choice of stylish kitchen doors and solid surface worktop*
- One & a half bowl sink with mixer tap
- Integrated appliances including; fan assisted electric double oven, 5 ring hob, stainless steel extractor hood, fridge-freezer, dishwasher
- Feature under-cupboard lighting

Bathroom and Ensuite

- Thermostatically controlled shower over bath and to ensuite shower enclosure
- Villeroy & Boch white sanitaryware with chrome fittings
- Trojan white bath
- Shaver point
- Choice of Porcelanosa ceramic wall and floor tiles*

External

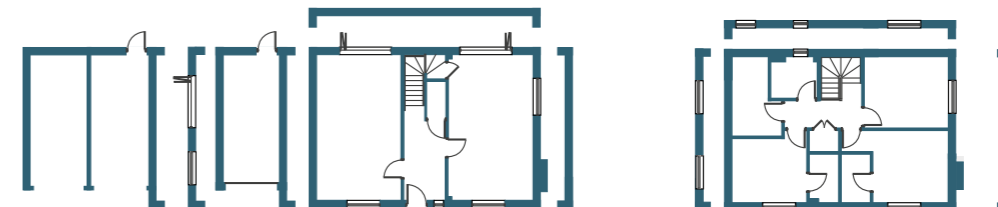
- Turf to rear garden
- Fencing to rear garden
- Outside tap
- External lights to front and rear

General

- PVCu double-glazed windows with locking handles
- Oak veneered doors with chrome door furniture
- Gas central heating with thermostatically controlled radiators
- Recessed downlighters to kitchen, bathroom & ensuite
- TV and Telephone point to ground floor and master bedroom
- Hard-wired smoke alarms with battery back-up to all floors
- Bifolds to living and kitchen areas

Living	7.04m x 4.08m	23ft x 13.3ft
Kitchen / Dining	7.04m x 4.13m	23ft x 13.5ft
Bedroom 1	3.65m x 3.48m	11.9ft x 11.4ft
Bedroom 2	3.64m x 3.11m	11.9ft x 10.1ft
Bedroom 3	4.08m x 3.47m	13.3ft x 11.3ft
Bedroom 4	3.79m x 2.38m	12.4ft x 7.7ft

Wall variations



*Choices are available subject to stage of construction

Whilst every effort has been made to ensure that this information is correct, it is intended as a guide only. No responsibility or liability will be accepted by Latimer in relation to the information provided and this does not constitute or form any part of a contract of sale. Purchasers should satisfy themselves with regard to the accuracy of the information. All dimensions are approximate and to the widest point. Given that each home has a unique layout, please check the actual plot or ask the sales team for further details. Latimer and associated companies reserve the right to amend the home layouts, specification or materials. All details correct as above at time of going to print. November 2020.



LATIMER
by Clarion Housing Group

Marketing Suite

1 Fieldfare Way, Sandbach, CW11 3TR
(Access off Abbey Road CW11 3HA)

Latimer Sales Enquiries

For all sales enquiries get in touch
with our dedicated sales team

E: sales@broadmeadowpark.co.uk

T: 01270 260 506

W: broadmeadowpark.co.uk

Latimer is part of Clarion Housing Group.
Latimer Developments Limited.

It all begins here.