

THE BRAMHALL



BROADMEADOW PARK  
SANDBACH • CHESHIRE



The Bramhall is a spacious 4 bedroom family home featuring a large lounge, separate family/study room, four well proportioned bedrooms and a detached garage.



**LATIMER**  
by Clarion Housing Group

# Site plan

- The Bramhall
- Show homes and marketing suite



# Specification

## Kitchen

- Choice of stylish kitchen doors and solid surface worktop\*
- One & a half bowl sink with mixer tap
- Integrated appliances including; fan assisted electric double oven, 5 ring hob, stainless steel extractor hood, fridge-freezer
- Integrated dishwasher
- Feature under-cupboard lighting

## Bathroom and Ensuite

- Thermostatically controlled shower over bath and to ensuite shower enclosure
- Villeroy & Boch white sanitaryware with chrome fittings
- Trojan white bath
- Shaver point
- Choice of Porcelanosa ceramic wall and floor tiles\*

## External

- Turf to rear garden
- Fencing to rear garden
- Outside tap
- External lights to front and rear

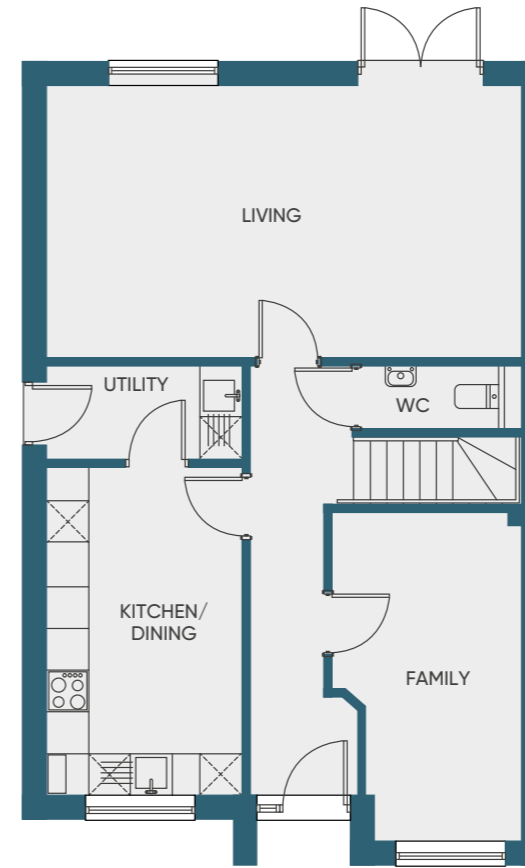
## General

- PVCu double-glazed windows with locking handles
- Oak veneered doors with chrome door furniture
- Gas central heating with thermostatically controlled radiators
- Recessed downlighters to kitchen, bathroom & ensuite
- TV and Telephone point to ground floor and master bedroom
- Hard-wired smoke alarms with battery back-up to all floors
- Additional Heat detector to kitchen

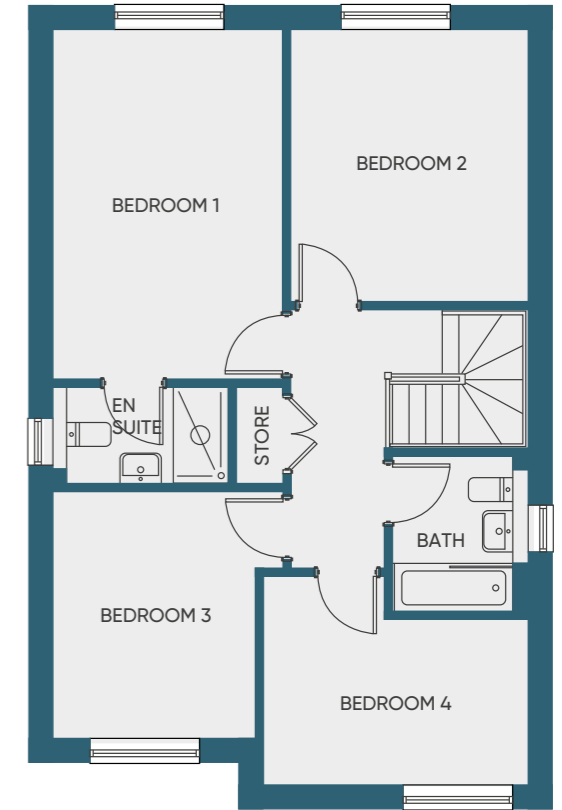
\*Choices are available subject to stage of construction

# The Bramhall

4 bedroom house



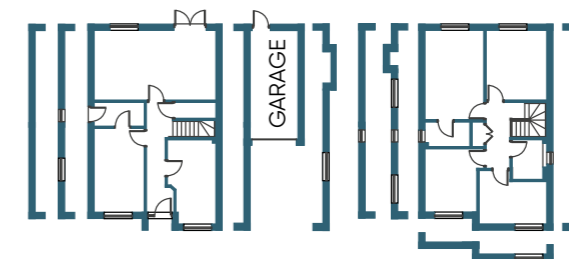
Ground floor



First floor

Kitchen	4.66m x 2.80m	16.1ft x 9.3ft
Lounge / Dining	6.93m x 3.95m	22.2ft x 13ft
Study	4.79m x 2.80m	15.7ft x 9.1ft
Bedroom 1	5.09m x 3.37m	16.6ft x 11ft
Bedroom 2	3.98m x 3.46m	13ft x 11.3ft
Bedroom 3	3.62m x 2.97m	11.8ft x 9.7ft
Bedroom 4	3.86m x 2.45m	12.6ft x 8ft

Wall variations



Whilst every effort has been made to ensure that this information is correct, it is intended as a guide only. No responsibility or liability will be accepted by Latimer in relation to the information provided and this does not constitute or form any part of a contract of sale. Purchasers should satisfy themselves with regard to the accuracy of the information. All dimensions are approximate and to the widest point. Given that each home has a unique layout, please check the actual plot or ask the sales team for further details. Latimer and associated companies reserve the right to amend the home layouts, specification or materials. All details correct as above at time of going to print. November 2020.



**LATIMER**  
by Clarion Housing Group

**Marketing Suite**

1 Fieldfare Way, Sandbach, CW11 3TR  
(Access off Abbey Road CW11 3HA)

**Latimer Sales Enquiries**

For all sales enquiries get in touch  
with our dedicated sales team

**E:** [sales@broadmeadowpark.co.uk](mailto:sales@broadmeadowpark.co.uk)

**T:** 01270 260 506

**W:** [broadmeadowpark.co.uk](http://broadmeadowpark.co.uk)

Latimer is part of Clarion Housing Group.  
Latimer Developments Limited.

**It all begins here.**